

MCCALL FIRE PROTECTION DISTRICT



CAREER OPPORTUNITY

Lateral Firefighter EMT / Paramedic

\$65,950.12 - \$91,962.48 DOQ

The McCall Fire Protection District, located near the shores of Payette Lake, is seeking highly motivated, experienced and visionary fire service professionals to serve in our beloved resort community.

Providing our community with caring service that exceeds expectations.



MCCALL FIRE PROTECTION DISTRICT

201 Deinhard Lane, McCall, ID 83638 | 208-634-7070 | mccallfire.com

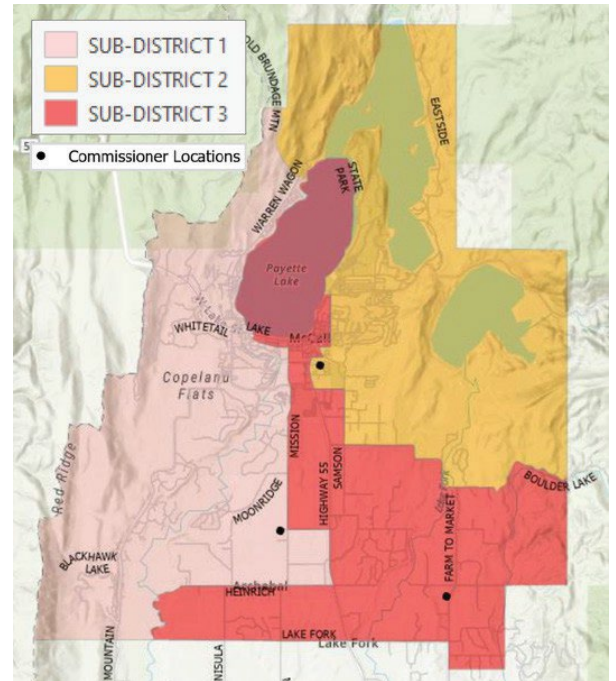
ABOUT THE DISTRICT

The McCall Fire Protection District is an “All Hazard” district, addressing various community needs and incidents to ensure positive outcomes. **Firefighters handle structural fires, vehicle extrication, backcountry rescues, swift water and ice rescues and wildland firefighting.** The District provides ALS transport services and covers approximately 100 square miles, including the City of McCall. It is managed by a Fire Chief and a 3-member Board of Commissioners.

The District has one staffed station with 12 full-time firefighters, a Fire Chief, a Deputy Chief, an Office Administrator and 25 Paid-Call members.

OUR MISSION Provide caring services that exceed expectations.

OUR VALUES We strive for teamwork, integrity and excellence in all of our operations. We are a combination department with both career and paid-on-call members, offering 24/7 advanced medical life support.



This map helps illustrate the size of the district as it relates to the lake and the Commissioner Sub-District locations.



ABOUT THE POSITION

Under supervision of the Fire Captain, the Firefighter EMT (Paramedic preferred) shall provide the highest possible level of fire, rescue, and pre-hospital emergency medical service (EMS) functions, perform fire suppression, emergency services education, emergency medical and rescue services per certification, hazardous materials mitigation, and required duties as related to the fire service within the community, locally, and statewide.

Additionally, participate in the daily activities to ensure efficient operation. Must be dedicated to integrity, teamwork, and excellence.

This position works a 48/96 schedule averaging 53-hours per week inclusive of weekdays, weekends, and holidays.

Applicants must be physically fit to meet the demands of fire service and rescue operations and able to work in various environments during periods of inclement weather along with the possibility of heavy smoke conditions, dust, steep and rough terrain, and under physically and mentally stressful conditions. Requires sufficient hand eye coordination to perform technically skilled movements in less than favorable conditions with power tools, ladder applications, self-contained breathing apparatus, use of various hydraulic tools, and sophisticated EMS procedures, and other fire service-related and technical rescue operations.



COMPENSATION AND BENEFITS

All salaries and benefits are per the current Collective Bargaining Agreement (CBA) with IAFF Local 4564. Salary will be based upon qualifications.

NOTE: Firefighter/Paramedics are paid a 12% incentive of their base pay per year.

CLASSIFICATION	STEP 1	STEP 2	STEP 3
Probationary FF	\$65,950.12	-	-
Firefighter	\$68,493.54	\$76,027.99	\$82,109.36

CLASSIFICATION REQUIREMENTS:

STEP 1 (Year 1): FFI, Haz-Mat Awareness and Operations, S-130, S-190 Wildland.
Firefighter 2 ICS 100, ICS 200, IS 700

EMS Certifications - EMT-Basic / Advanced Healthcare Provider/CPR

EMT - Paramedic ACLS, PALS, Healthcare Provider/CPR

STEP 2 (Year 2): FF2, Driver Operator

STEP 3 (Year 3 / Senior Firefighter): Fire Instructor I, Blue Card Command

* *All certifications can be IFSAC or equivalent.*

ADDITIONAL BENEFITS

DETAILS

Retirement

Idaho PERSI - Rule of 80

Medical, Dental & Vision Insurance

District pays 100% of the premiums for employees. For spouses/dependents, the District pays 100% minus \$25/month per individual. District also pays 100% of the deductible for the employee.

Life Insurance

District-paid AD&D life insurance

Uniform, PPE & Gear Stipend

District provides all required uniforms and PPE
\$300 annual gear stipend provided

Sick Time

Accrues at 10 hours per month

Personal Leave Accrual

132 to 192 hours per year (based on years of service)

College Degree Incentive

Associate: 1%, Bachelors: 3%, Masters: 5%
added to base salary. Capped at 5%. Only the highest degree applies

Longevity Pay

0.5% of base pay per year of service, added to monthly salary. Begins after probation. No cap.

Kelly Day Compensation

132 hours paid annually (5.1 hours at 1.5x rate every two weeks) in lieu of Kelly Days.

Post Employment Health Plan (PEHP)

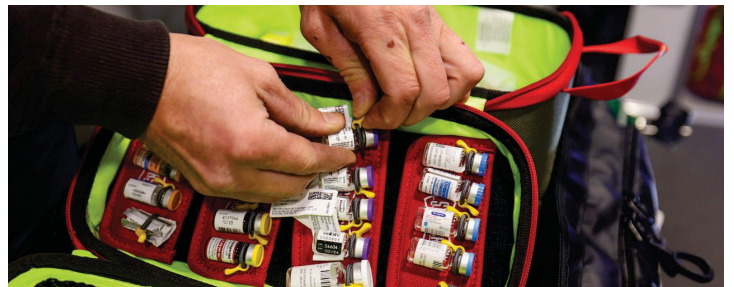
Available to all full-time members. Contributions possible - details available upon request.

MINIMUM REQUIREMENTS

- Valid current Idaho State EMS License or National Registered EMT/Paramedic (Idaho licensed within 60 days of appointment)
- Valid health care provider CPR certification
- Valid PALS certification (Paramedic)
- Firefighter 1 IFSAC; or equivalent
- ICS-100, ICS-200, NIMS 700 certifications
- Valid drivers license with a clean driving record
- Must be 18 years of age or older
- Must possess a High School diploma or GED

PREFERRED & DESIRED QUALIFICATIONS

- Two-years, full-time experience as a Firefighter / Paramedic or equivalent
- Associate's or Bachelor's degree
- Driver/Operator, IFSAC / Pro Board or equivalent
- Firefighter 2, IFSAC / Pro Board or equivalent
- Engineer experience
- Company Officer development
- HazMat Tech
- ALS Transport Experience Preferred
- Preference for applicants living within 30 miles of the Fire District



APPLICATION PROCEDURE

Interested candidates should complete the District Application (available online) at www.mccallfire.com/employment

Submit the application, attach a completed letter of interest, resume and copies of required and applicable certifications to recruiting@mccallfire.com

Any applications that are mailed or delivered in person will not be accepted.

CLOSING DATE: 5:00 PM MAY 9, 2025.

Applications received after this date and time will not be eligible.

**All application materials will be evaluated and only the most highly qualified candidates will be invited to continue in the selection process.*

SELECTION PROCESS

THE SELECTION PROCESS MAY INCLUDE ANY OR ALL OF THE FOLLOWING:

- Application Review
- Resume Review
- EMS Credential Verification
- Written Exam
- Physical Agility Test
- Paramedic Written Exam
- Assessment Center
- Chief's Interview

EMPLOYMENT CONTINGENT ON:

- Reference Review
- Background Check
- Pre-employment NFPA 1582 Medical and Physical Assessments
- Drug / Alcohol screening

ADDITIONAL INFORMATION

SCHEDULE: This position requires a minimum of 53 hours per week

PROBATION: This position has a probationary period of one year.

CONTACT:

208-634-7070

recruiting@mccallfire.com

201 Deinhard Lane, McCall ID 83638

www.mccallfire.com



McCall Fire Protection District is an Equal Opportunity Employer



MCCALL FIRE PROTECTION DISTRICT

201 Deinhard Lane, McCall, ID 83638 | 208-634-7070 | mccallfire.com